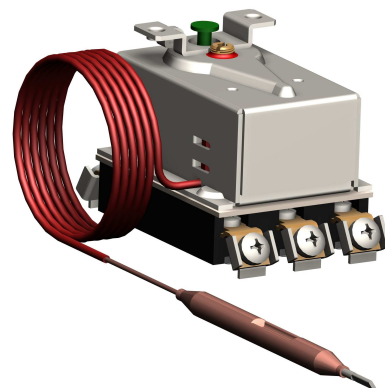


Safety-limit thermostat

Three pole switch



Application

safety-limit thermostat with capillary, for applications up to 330°C.

Features

Electro-mechanical safety limit thermostat, fail-safe. If cut-out temperature exceeded, circuit switches to OFF and stays at this position. Manual reset after sensing element has cooled by the switching differential

- Approved to EN 60 730-1 / -2-9
- Time factor of sensing element according to DIN 3440
- Features of automatic action: Type 2.B.J.K.L according to EN 60 730-1 / -2-9
- Degree of pollution: 2
- RoHS-conform

Technical data

Switching system:

Nominal voltage range	AC 24...400 V
Nominal current range	20 (3,3) A
Service life at nominal load	500 operations
Protection against electric shock	for incorporation in class I equipment
Protection standard of housing	IP00 (EN60529)
Overvoltage category	II

Range of application:

Cut-out temperatures: <i>(Maximum values, other ranges on inquiry)</i>	Up to 330°C
Max. sensing element temperature	> $t_{max} + 25^\circ\text{C}$
Ambiant temperature at switching head	max. 125 °C (T125)
Storage and transport temp.	-25...+60 °C

Calibration:

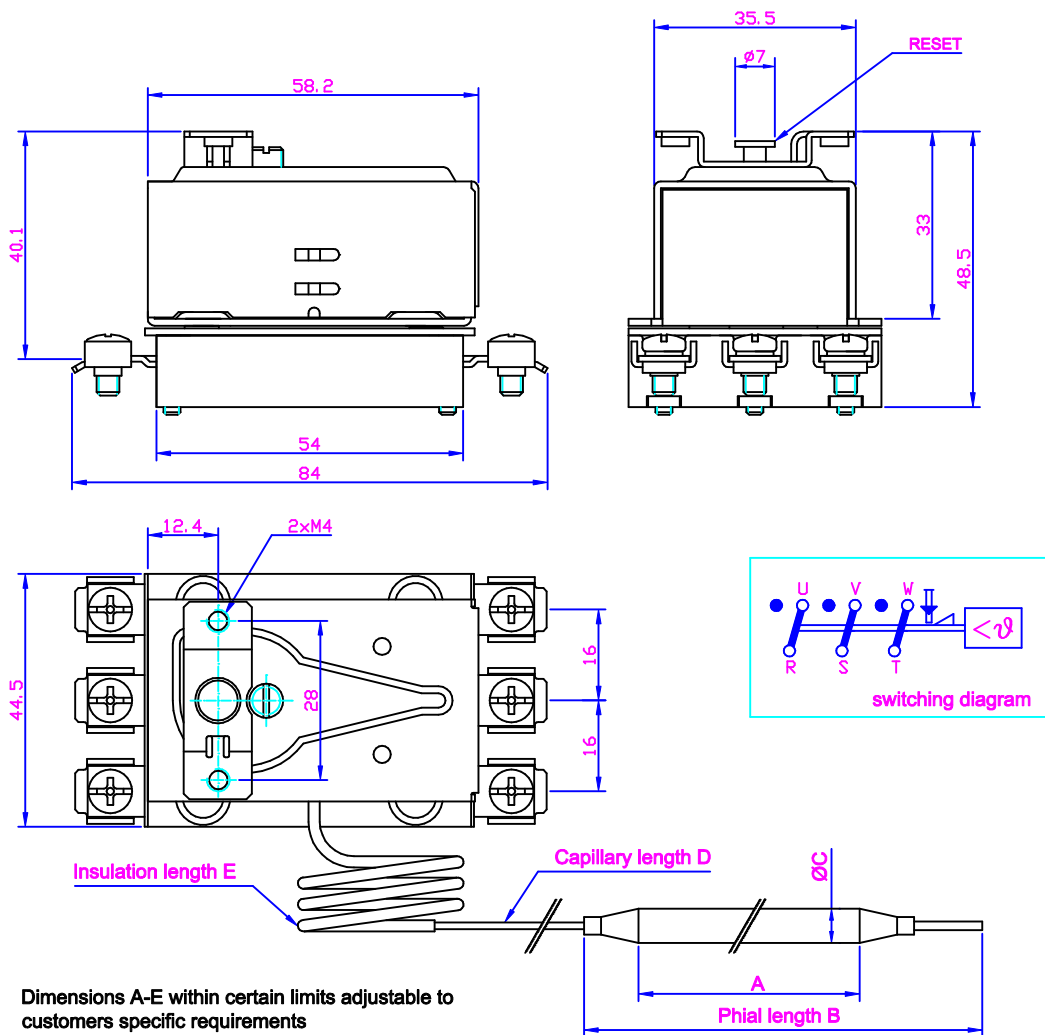
Calibrated for ambient temperature at switching head and capillary tube	23°C (Tu23 to DIN 3440)
Time factor in water / in oil	< 45 s / < 60 s

Design:

Switch system support (base isolation)	plastic, GWT 850°C
Capillary und sensing element	copper / stainless steel
Capillary length	300 ... 3500 mm
Diameter of sensig element	6, 6.5 mm (3, 4, 5, 7, 8, 9.5, 10mm)
Diaphragm	stainless steel
Connection terminals	
Screw terminals	M4x8
Tab terminals (free combination)	A6.3x0.8 0°, 45°, 60°, 90°

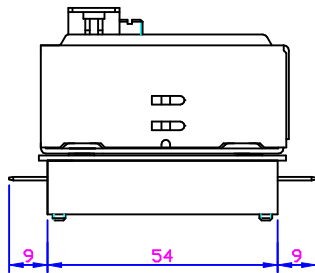
Examples

Cut-out temp. [°C]	Calibration tolerancez [K]	Thermal switching differential [K]	Max. sensing element temp. [°C]
110	0 - 6	~10	140
220	0 - 11	~20	250
330	0 - 16	~30	370

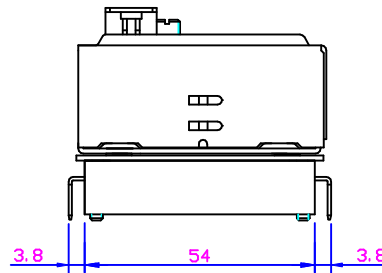


Dimensions A-E within certain limits adjustable to customers specific requirements

View with tab terminals 0°



View with tab terminals 90°



Other products

- RAC Combined three pole control / limit and safety-limit thermostat
- 88, 716 Single pole control / limit thermostat
- 89, 710 Single pole safety-limit thermostat